

THE ORIGINS

- **Getting our Land back**
- **Caring for our Land**
- **The Integrated Development Plan (IDP)**



VISION

- ***Protect and manage unique biodiversity to the advantage of the local people.***

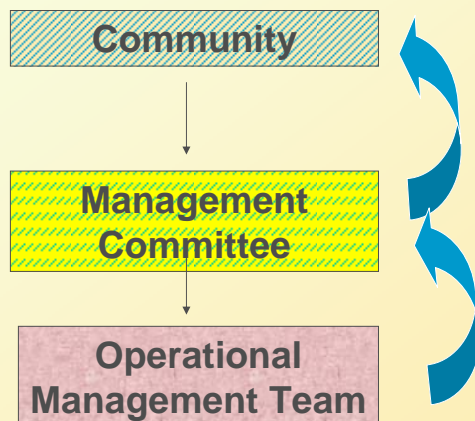


MISSIONS

- **Conduct proper planning;**
- **Promote integrated, effective and sustainable use of resources;**
- **Investigate and facilitate participation;**
- **Establish effective management systems;**
- **Continuous monitoring and evaluation**



MANAGEMENT



MANAGEMENT COMMITTEE

- **Inclusive and Expandable as Needed**
- **Broad based Representation**
 - *Representatives of the four villages*
 - *Women representatives of the four villages*
 - *Richtersveld Municipality and other levels of government*
 - *Richtersveld Sida !hub Community Property Association*
 - *Richtersveld Tourism Association*
 - *Richtersveld CBNRM Programme*
 - *Richtersveld Community Management Committee (RGBK)*
 - *Richtersveld Small Miners Association*
 - *Richtersveld Farmers Union*
 - *Richtersveld Traditional Nama Council*
 - *District Municipality*
 - *SANParks*
 - *DTEC (Province)*
 - *Department of Sport, Arts & Culture (Province)*

USES OF THE CONSERVANCY

Principle of Multiple Resource Uses

- **Tourism,**
- **Grazing,**
- **Conservation and**
- **Research**



IMMEDIATE TARGETS

- **Establish Management Authority**
- **Develop sufficient infrastructure**
- **Achieve financial sustainability**
- **Create diversity of livelihoods**



PRODUCT DEVELOPMENT

- **Hiking**
- **4x4 routes**
- **Camping**
- **River rafting / canoeing**
- **Fishing**
- **Mountain biking**
- **Climbing**
- **Horse trails**
- **Multi activity adventure trails**
- **Nursery, Medicinal Garden**
- **Donkey car rides**
- **Star gazing**
- **Airplane flights**

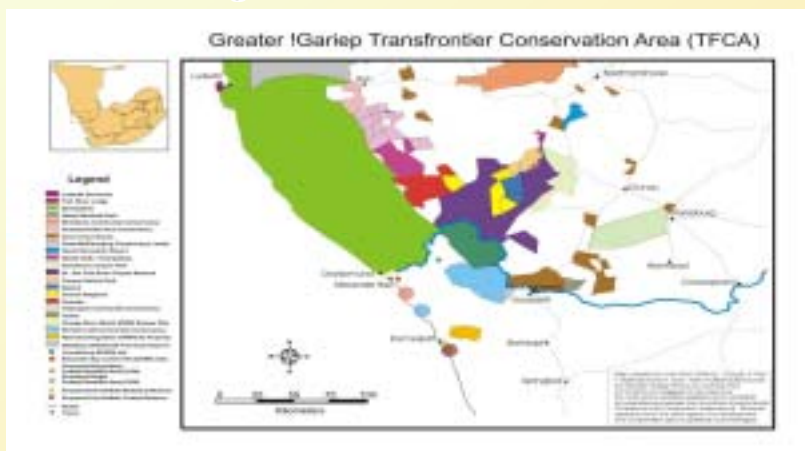


WHERE WE ARE IN THE PROCESS?

- **Management Plan completed**
- **Management structures in place**
- **Social Responsibility Funding secured**
- **Study visits to Namibia conducted**
- **Legal Status being finalized**
- **TIC's are operational**
- **Other marketing being stepped up**
- **Continuing capacity building**

THE BROADER PICTURE

- **Greater !Gariep TFCA**
- **World Heritage Site**



CONCLUSION

- We must always remember that a loss in biodiversity not only can obstruct economically processes, but also attempts to alleviate poverty, because it is the environment that provides to us.
- The loss in biodiversity is like burning library books before they could be read.
- The only solution is to involve more and more local communities in conservation and to use conservation plans to empower people social-economically.
- There can be no economically progress without ecological sustainability.
- Our Richtersveld Community Conservancy is such a process and we are striving to do everything in our power to protect this God-given Creation!
- And this is our encouragement to you too, don't let anything come in your way to conserve!