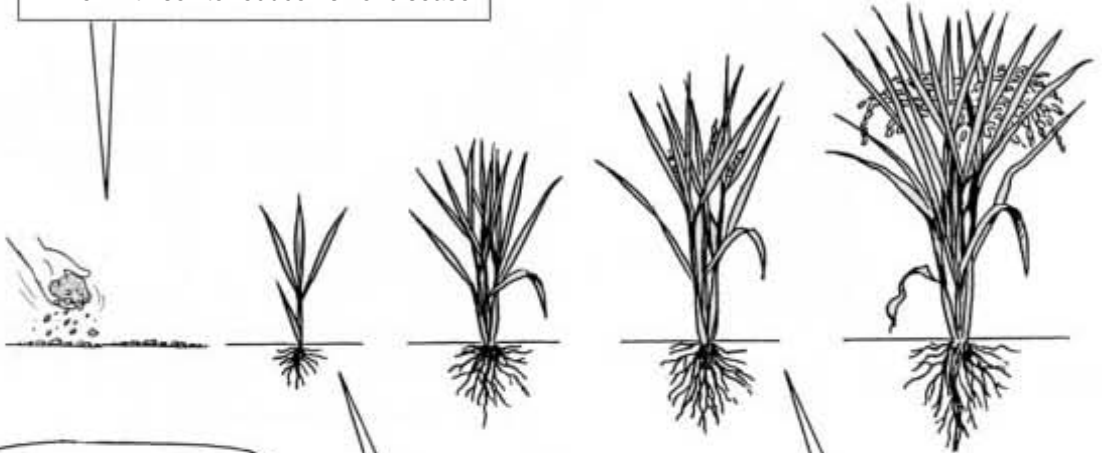


Using Fertilizer Effectively

Three best times for fertilizer

*Be careful not to apply fertilizer before rain.

(1) Mix compost or organic fertilizer well with soil to reduce risk of disease.



Lack of fertilizer and too much fertilizer can cause damage to your plants. If you apply too much nitrogen, it can cause spots on leaves and plants may become lodging, too.

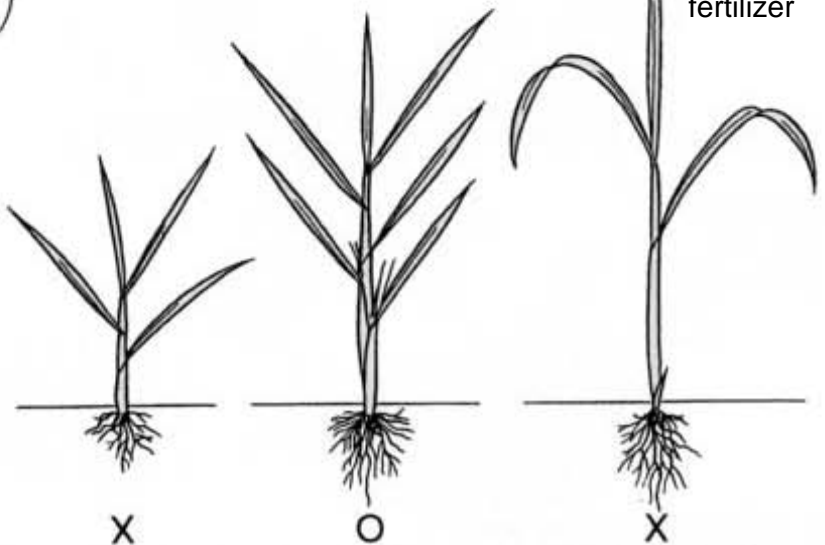
(2) Apply fertilizer during tillering.

(3) Apply fertilizer before flowering.

Right amount of fertilizer

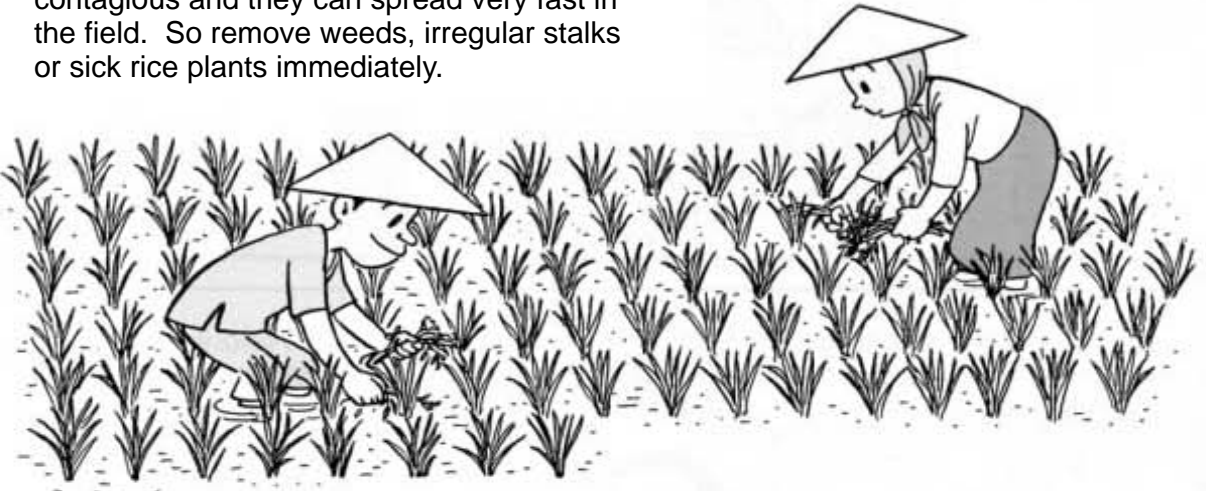
lack of fertilizer enough fertilizer

too much fertilizer



Remove Weeds and Sick Rice Plants

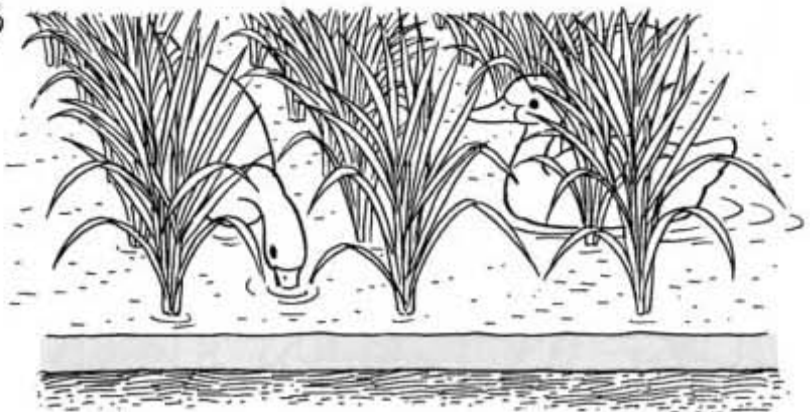
Weeds may carry disease or take away the nutrients from the soil that the rice needs to grow well. Some rice diseases are contagious and they can spread very fast in the field. So remove weeds, irregular stalks or sick rice plants immediately.



Weeding during the first few weeks after planting increases healthy growth of rice. Later, ducks can help reduce weeds.

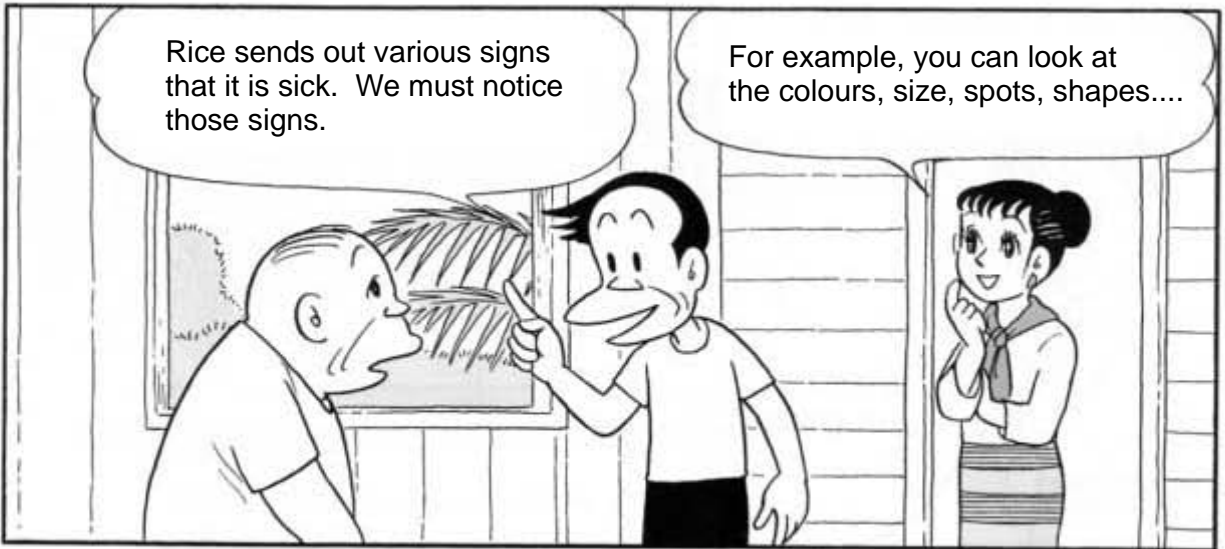
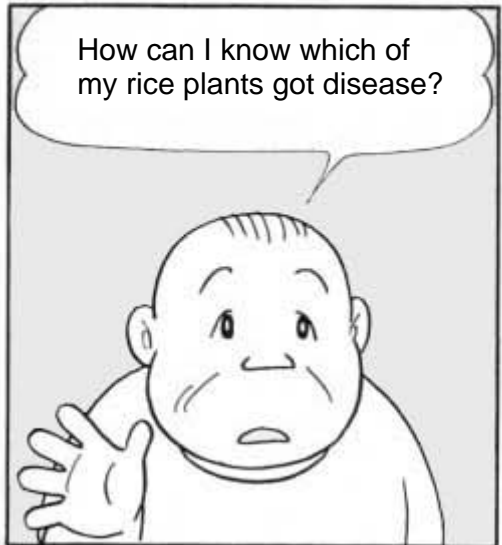
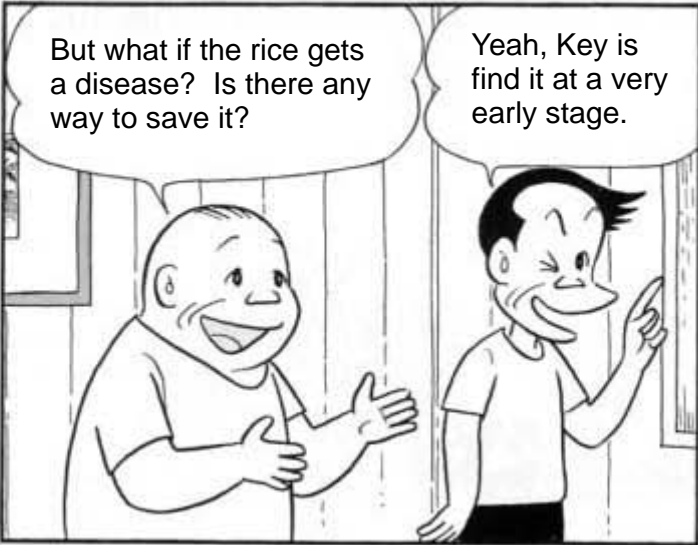
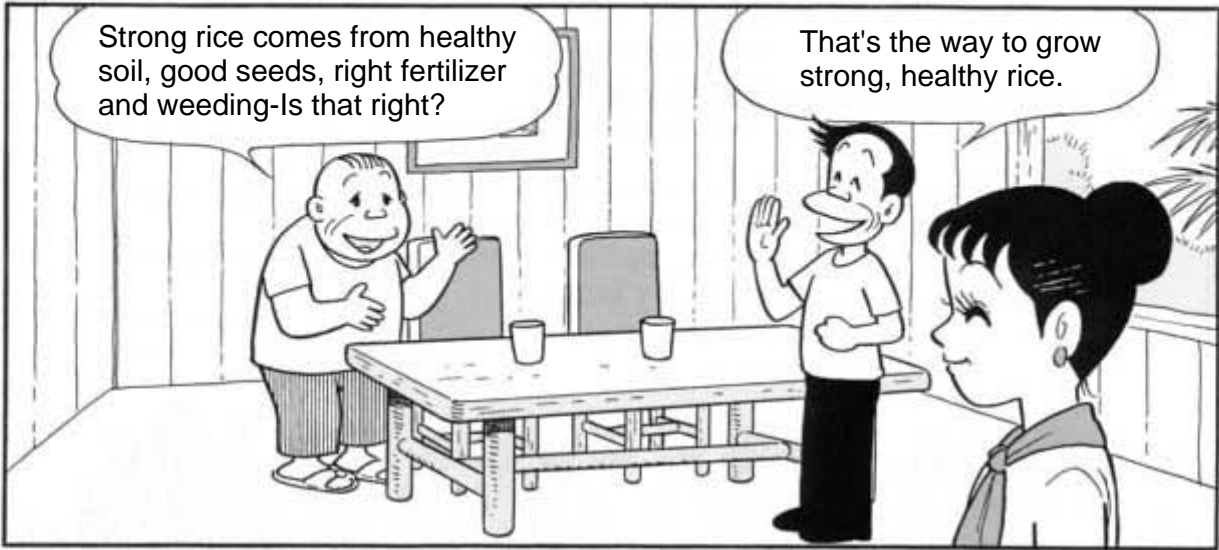


Paddy with weeds and sick plants

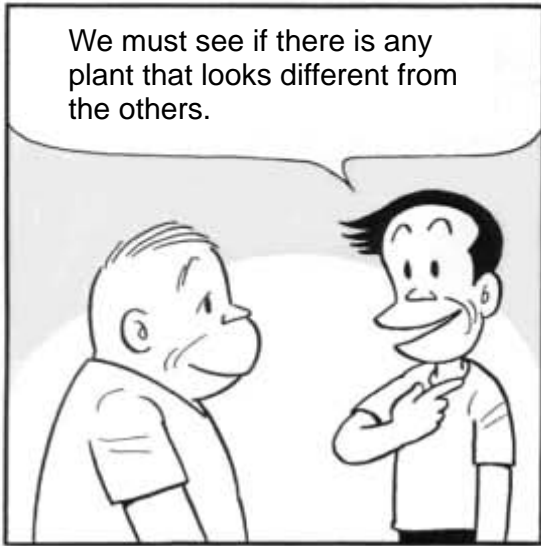


Paddy without weeds and sick plants





We must see if there is any plant that looks different from the others.



Is there any colour change in the leaves, are they yellowish, brownish or whitish?



Colour

Are some plants shorter or taller than others?



Size

Are there spots on the leaves?



Spots

Is there strange structure of grains?



Shape

My towel, the colour has faded, it's got holes and the shape is unusual!

Ha, ha! Just like sick rice!

